



MASTER/PILOT EXCHANGE of INFORMATION

OUTER HARBOUR

Ship Name Pilot

From PST/SST To PST/SST

Time	Height	Residual (cms)
Ebb	Flood	Slack

Wind Direction Speed

Forecast/Warnings

HW

LW

Pilot Ladder Port/Starboard 2 metres above water with 2 manropes plus heaving line on standby.

TUGS (Bollard Pull @ 85% MCR)	VHF	Tugs/Launches/Moorers Ch13 (68)
Svitzer Harrier	65t	
Svitzer Albatross	65t	
Svitzer Falcon	65t	
Svitzer Eagle	65t	
Wambiri	48t	
Chit ID		
Units		
POB		
Departure		
Arrival		
Pilot off		
LOA>275m (yes/no)		
DUKC (yes/no)		
ALCOA (yes/no)		
Special Unit Requested		

WWW.FREMANTLEPILOTS.COM.AU

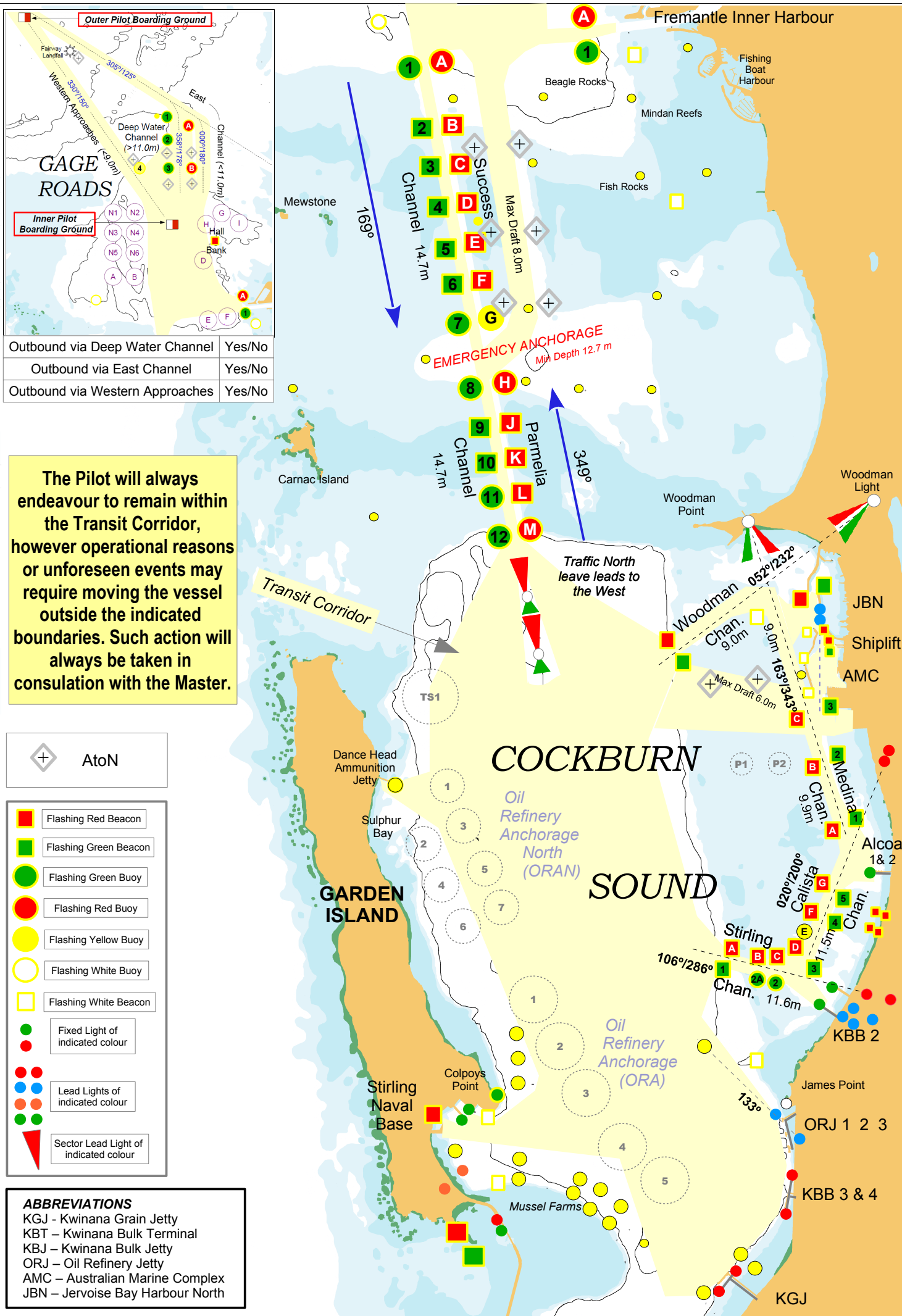
- TUGS USE OWN LINES ■ LOWER TUGS LINE SLOWLY ■ DO NOT SEND LINES UNTIL REQUESTED BY PILOT
- KEEP PROPELLER CLEAR AT ALL TIMES ■ DO NOT TENSION LINES UNTIL REQUESTED BY PILOT

EQUIPMENT TESTED & OK	Yes/No	DRAFTS		Depth	<input type="text"/>
PILOT CARD COMPLETE	Yes/No	Ford	Aft	Tide	<input type="text"/>
STEERING MOTORS	One/Two	Anchors cleared (Y/N)		Draft	<input type="text"/>
ENGINE TESTED ASTERN	Yes/No			UKC	<input type="text"/>
GYRO COMPASS ERROR	H/L			DUKC	Yes/No
BOW THRUSTER	Yes/No	HP/kW	%		
STERN THRUSTER	Yes/No	HP/kW	%		
HAZARDOUS CARGO	Yes/No	Type			

- Plan may alter plan due to operational requirements and any deviations will be discussed. ■ AIS to be in underway mode
- BRIDGE TEAM Continuously monitor passage ⚠ Alert pilot of unscheduled deviations ⚠ Keep lookout for recreational vessels

MASTER'S SIGNATURE PILOT'S SIGNATURE DEFECTS/ADDITIONAL INFO.

Time: Date: / / 20



Outbound via Deep Water Channel	Yes/No
Outbound via East Channel	Yes/No
Outbound via Western Approaches	Yes/No

The Pilot will always endeavour to remain within the Transit Corridor, however operational reasons or unforeseen events may require moving the vessel outside the indicated boundaries. Such action will always be taken in consultation with the Master.

AtoN

- Flashing Red Beacon
- Flashing Green Beacon
- Flashing Green Buoy
- Flashing Red Buoy
- Flashing Yellow Buoy
- Flashing White Buoy
- Flashing White Beacon
- Fixed Light of indicated colour
- Lead Lights of indicated colour
- Sector Lead Light of indicated colour

- ABBREVIATIONS**
- KGJ - Kwinana Grain Jetty
 - KBT - Kwinana Bulk Terminal
 - KBJ - Kwinana Bulk Jetty
 - ORJ - Oil Refinery Jetty
 - AMC - Australian Marine Complex
 - JBN - Jervoise Bay Harbour North